

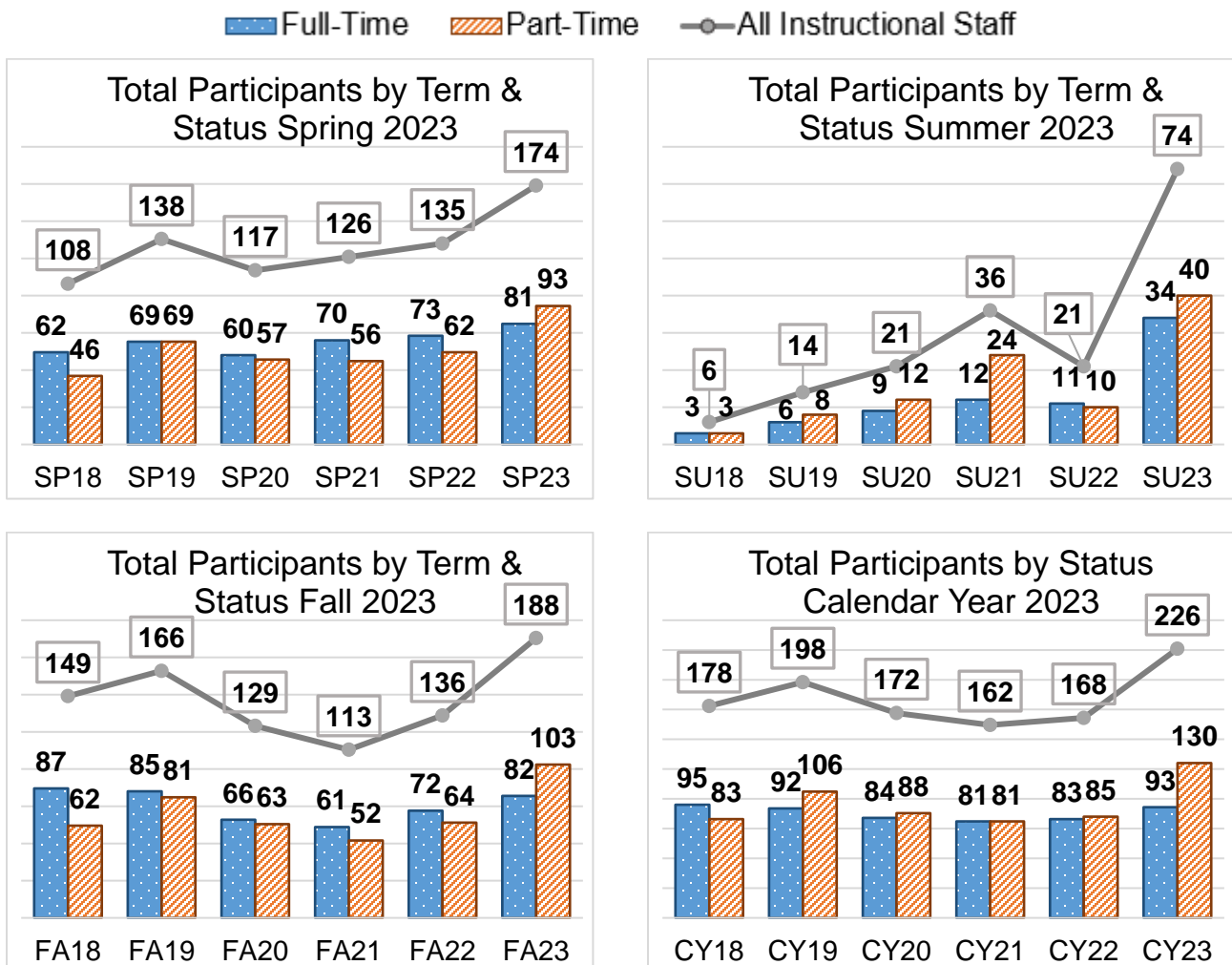
2023 Annual Assessment Report—Brief Overview
Liz Medendorp, Director of Assessment of Student Learning
Pueblo Community College

1. Participation Rates

A. Year-to-To Year Participation Trends (Fig. 1.1, p. 4)

Participation	2017	2018	2019	2020	2021	2022	2023
PT Participation	16.93%	28.33%	31.40%	26.83%	26.13%	38.46%	55.79%
FT Participation	79.82%	90.48%	80.87%	75.00%	80.20%	78.30%	84.55%
Total Participation	33.18%	44.72%	43.79%	39.09%	39.42%	51.38%	65.01%
Sections Assessed	385	520	609	566	591	557	838
Courses Assessed	186	252	281	240	266	273	340
Completed Assessments	467	585	680	605	648	601	938

B. Participation Rates by Term and Status (adapted from Fig. 3.1, p. 24)



See full report p. 55, Table B2 for participation rates by status and Department

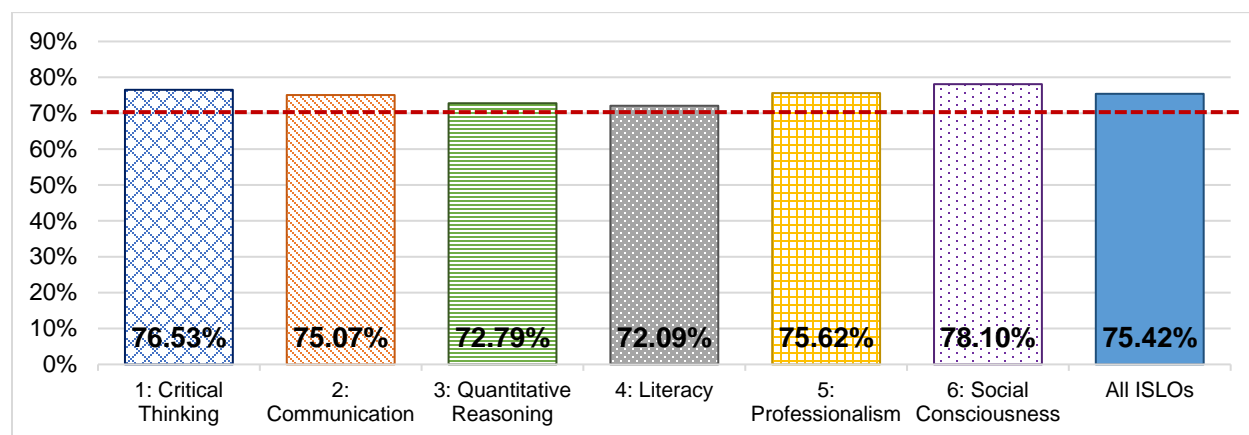
2023 Annual Assessment Report—Brief Overview
Liz Medendorp, Director of Assessment of Student Learning
Pueblo Community College

2. Performance Target Achievement

A. Year-to-Year Performance Trends (Fig. 1.2, p. 4)

ISLO	2017	2018	2019	2020	2021	2022	2023
1: Critical Thinking	63.85%	69.29%	67.68%	68.19%	71.08%	72.92%	76.53%
2: Communication	67.24%	64.14%	77.50%	79.44%	76.47%	71.14%	75.07%
3: Quantitative Reasoning	73.59%	77.68%	78.72%	76.71%	79.76%	72.44%	72.79%
4: Literacy	73.58%	69.44%	70.63%	75.53%	74.46%	69.86%	72.09%
5: Professionalism	77.82%	76.46%	77.92%	78.31%	79.15%	73.50%	75.62%
6: Social Consciousness	N/A	N/A	N/A	N/A	N/A	69.07%	78.10%
All ISLOs	70.26%	70.53%	73.50%	75.40%	76.20%	71.83%	75.42%

B. Overall ISLO Performance Target Achievement Rates (Fig. 5.10, p. 39)



See full report pp.56-57, Table B3 for performance trends by ISLO for each Division

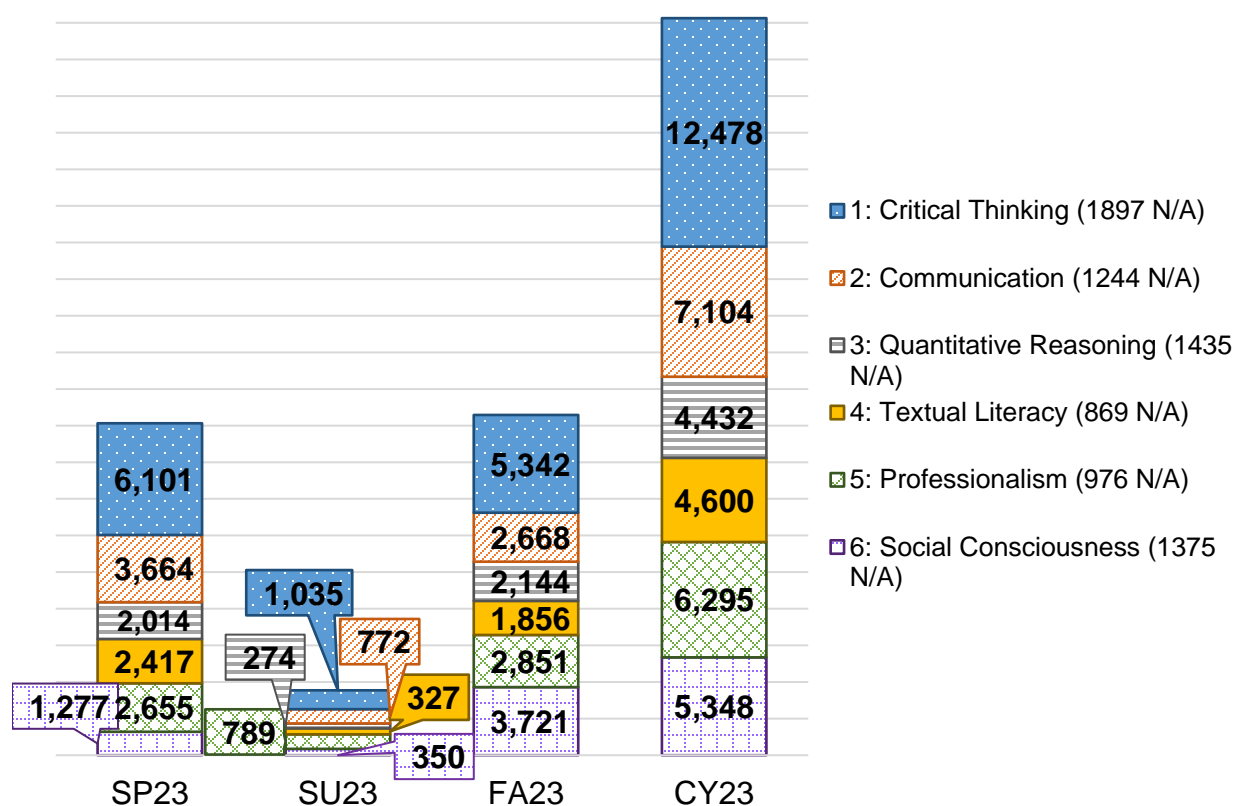
2023 Annual Assessment Report—Brief Overview
Liz Medendorp, Director of Assessment of Student Learning
Pueblo Community College

3. Sample Sizes

A. Year-to-Year Sampling Trends in Total Scores Collected (Fig. 1.3, p. 5)

ISLO	2017	2018	2019	2020	2021	2022	2023
1: Critical Thinking	10,002	11,316	11,932	8,704	6,167	7,606	12,478
2: Communication	5,262	7,209	8,570	8,676	7,030	5,959	7,104
3: Quantitative Reasoning	4,514	2,648	3,487	5,724	4,724	4,565	4,432
4: Literacy	5,322	7,892	5,741	4,278	6,493	5,916	4,600
5: Professionalism	6,266	8,393	7,559	6,809	6,064	6,343	6,295
6: Social Consciousness	N/A	N/A	N/A	N/A	N/A	2,118	5,348
All ISLOs	31,366	37,458	37,289	35,836	31,890	33,039	40,257

B. Scores Collected by ISLO & Term (Fig. 5.6, p. 35)



See full report pp. 58-59, Table B4 for sample size data by ISLO and Division

2023 Annual Assessment Report—Brief Overview
Liz Medendorp, Director of Assessment of Student Learning
Pueblo Community College

4. Program-Level Assessment

A. Year-to-Year Program-Level Assessment Trends (Fig. 1.4, p. 5)

Program Progress	2017	2018	2019	2020	2021	2022	2023
Prefixes with PSLOs	62/90	68/88	75/84	76/88	79/89	76/93	104/106
Total PSLOs	437	452	517	604	623	652	722
Mapped PSLOs	115	301	420	447	461	493	524
PSLOs with Rubrics	193	200	240	334	326	320	347
Completed PSLO Assessments	177	332	384	302	387	327	442
Courses	71	160	137	107	152	146	165
Sections	140	413	322	288	344	293	385

B. Total Students Assessed by Level & Division (Fig. 5.4, p. 34)

Level	All	ISLO	PSLO	CSLO
PCC Overall	10,235	2,995	4,459	3,382
A&S	4,195	1,653	1,185	1531
BAT	2,485	655	1,310	543
HPS	2,192	415	970	991
MBH	1,363	272	994	317

C. Course-Level Assessment Trends (Fig. 1.5, p. 6)

Course-Level Progress	2022	2023
Total CSLOs	Unknown	11,230
Mapped CSLOs	Unknown	1,412
CSLOs with Rubrics	Unknown	7,882
Completed CSLO Assessments	119	322
Students Assessed	1,462	3,382
Courses Assessed	58	136
Sections Assessed	108	277

See full report p. 24, Figure 3.2 for program-level progress by Division and Department